



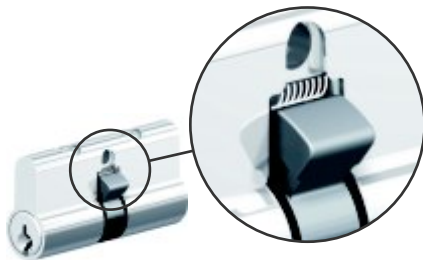
Security Door Cylinders



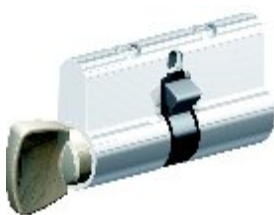
AA cylinder



Quick re-pinning feature



AA8 cylinder with cam-stop
(must be used with Ultimate locks)



Thumbturn cylinder

Description: AA Double cylinders for security door locks.

Special Features:

- **Quick and easy re-pinning** feature.
- **C4 and G keyways** are available.
(Lockwood and Gainsborough compatible)
- **Australian** design and manufacture.

Finish: Bright Chrome plated.

AA Cylinder: Austral Lock double cylinder for security and screen door locks. Suits Elegance series and SD7 series locksets.

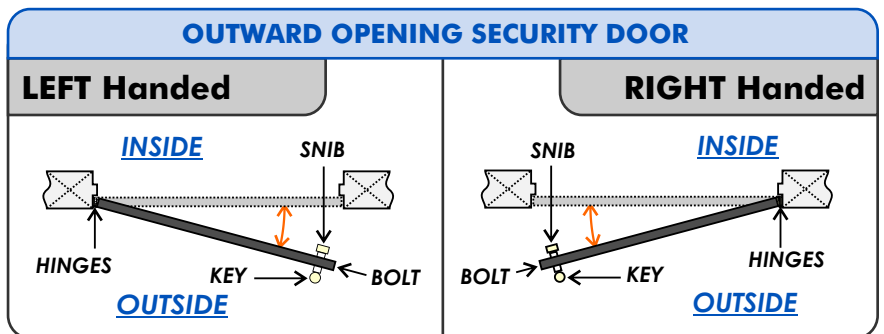
AA8 Cylinder : Austral Lock double cylinder with fitted cam-stop spring for security door locks. Suits Ultimate series locksets only.

Thumbturn Version: A cylinder version is available with a Thumbturn on the inside and a 5-pin C4 barrel on the outside. This cylinder can be locked from the outside only, and allows the occupant to exit at any time without keys. Handing must be known when ordering Thumbturn cylinders (see below).

Security Door Handing:

Hinged doors are either Left Hand Hinged (LHH) or Right Hand Hinged (RHH). For some types and brands of locks, it is important to know the door's handing, as some locks must be specified with the handing in mind. **All Austral locks are non-handed and will suit LHH and RHH doors without modification.**

It is easy to determine the handing on a hinged door: stand on the opening side (for example, the outside of a security door that opens outwards) and determine which side of the door the hinges are on. If they are on the left hand side, the door is Left Hand Hinged. If they are on the right hand side, the door is Right Hand Hinged.



Ordering Code	Description	Length	Compatible locksets
AA-C4/ KA or KD	AA 5-pin double cylinder with C4 keyway	62mm	Elegance series & SD7 series
AA-CG/ KA or KD	AA 5-pin double cylinder with G keyway	62mm	
AAC4LHTT/ KA or KD	AA 5-pin C4 cylinder with interior Thumbturn (for left hand door)	62mm	
AAC4RHHTT/ KA or KD	AA 5-pin C4 cylinder with interior Thumbturn (for right hand door)	62mm	
W2000/ KA or KD	W2000 wafer cylinder	46mm	
AA8-C4/ KA or KD	AA8 5-pin double cylinder with C4 keyway	62mm	Ultimate series
AA8-CG/ KA or KD	AA8 5-pin double cylinder with G keyway	62mm	
AA8C4LHTT/ KA or KD	AA8 5-pin C4 cylinder with interior Thumbturn (for left hand door)	62mm	
AA8C4RHHTT/ KA or KD	AA8 5-pin C4 cylinder with interior Thumbturn (for right hand door)	62mm	
W8 2000/ KA or KD	W8 2000 wafer cylinder	46mm	